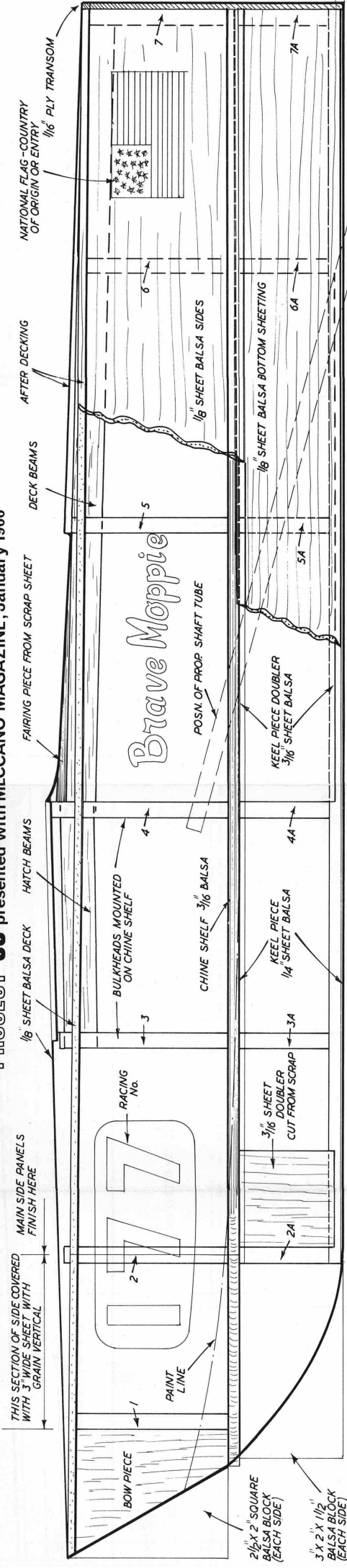
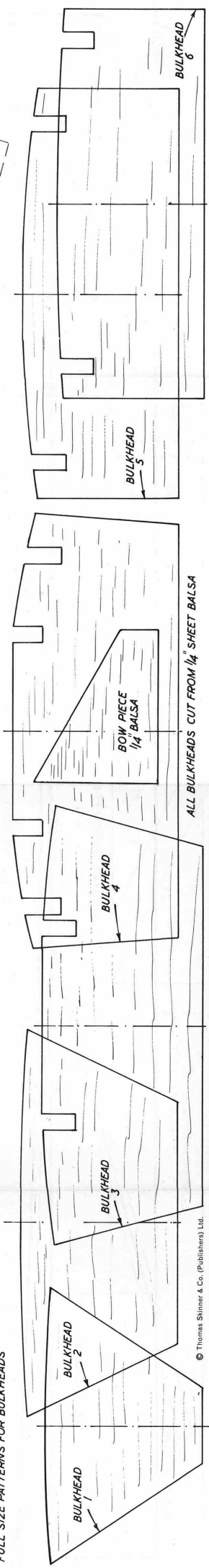
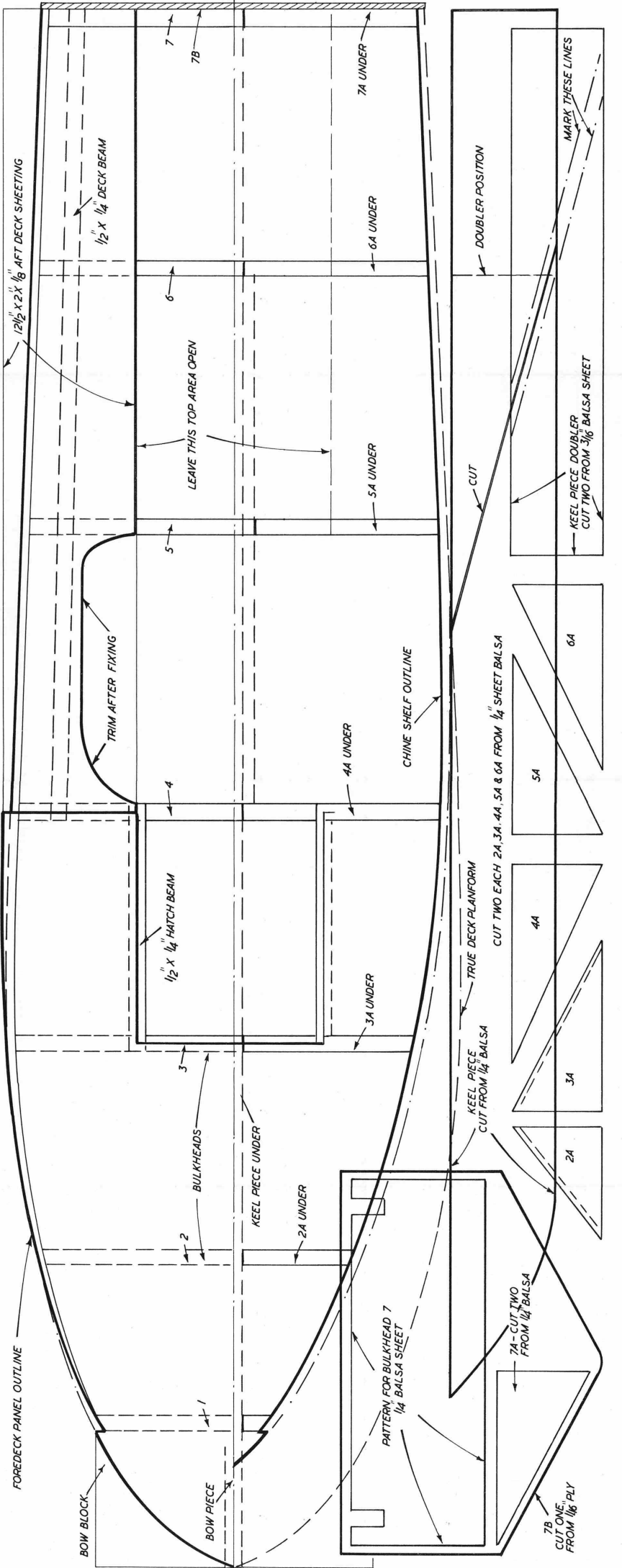


PROJECT '66 presented with MECCANO MAGAZINE, January 1966



FULL SIZE PATTERNS FOR BULKHEADS





FOREDECK PANEL OUTLINE

BOW BLOCK

BOW PIECE

BULKHEADS

1/2" X 1/4" HATCH BEAM

TRIM AFTER FIXING

LEAVE THIS TOP AREA OPEN

1/2" X 1/4" DECK BEAM

12 1/2" X 2" X 1/8" AFT DECK SHEETING

2

3

4

5

6

7

7B

KEEL PIECE UNDER

2A UNDER

3A UNDER

4A UNDER

5A UNDER

6A UNDER

7A UNDER

CHINE SHELF OUTLINE

TRUE DECK PLANFORM

KEEL PIECE CUT FROM 1/4" BALS

CUT TWO EACH 2A, 3A, 4A, 5A & 6A FROM 1/4" SHEET BALS

DOUBLER POSITION

CUT

7B CUT ONE FROM 1/16" PLY

7A-CUT TWO FROM 1/4" BALS

2A

3A

4A

5A

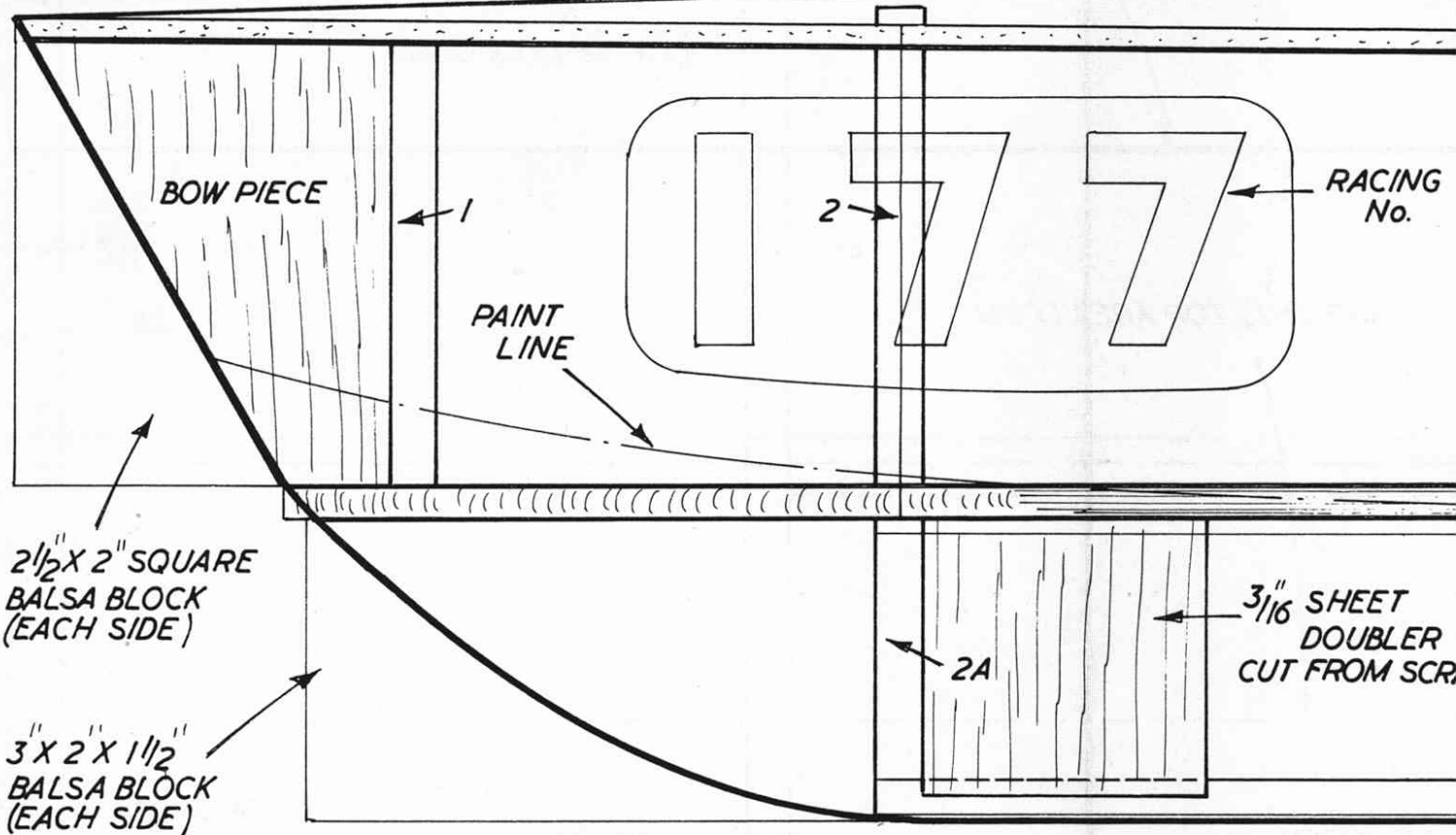
6A

KEEL PIECE DOUBLER CUT TWO FROM 3/16" BALS

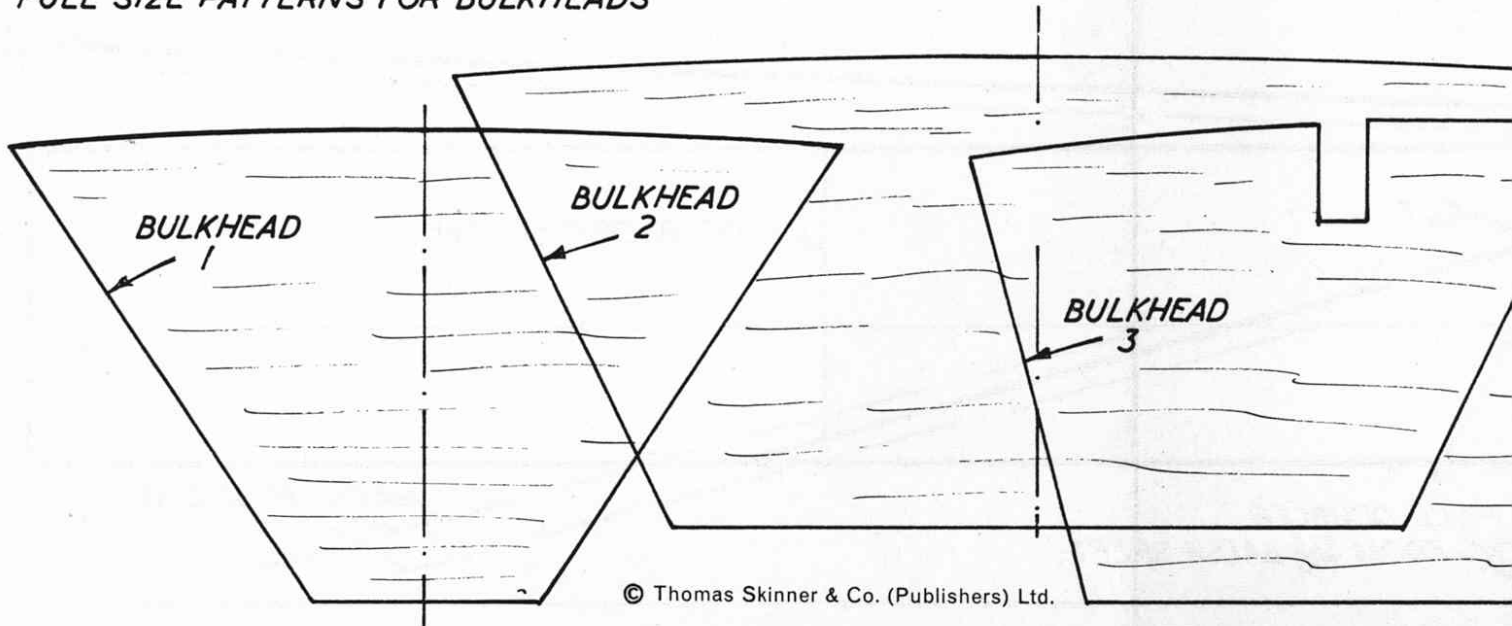
MARK THESE LINES

THIS SECTION OF SIDE COVERED
WITH 3" WIDE SHEET WITH
GRAIN VERTICAL

MAIN SIDE PANELS
FINISH HERE

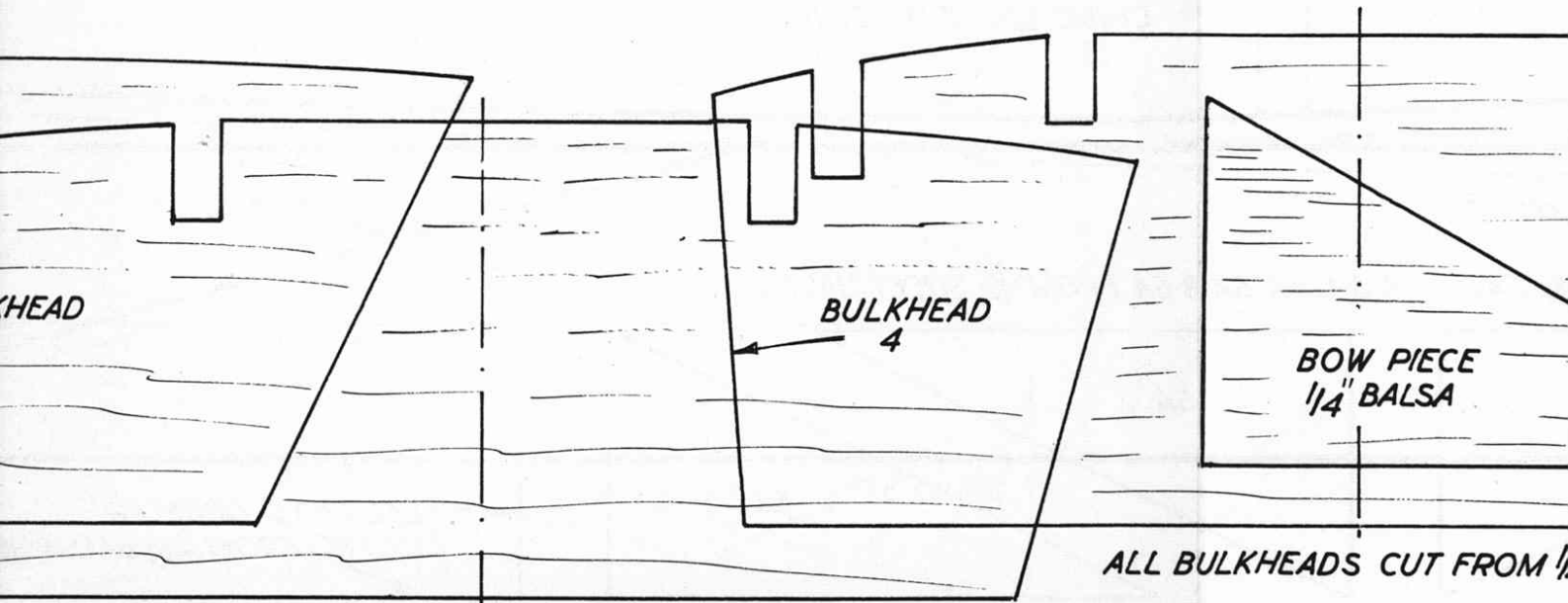
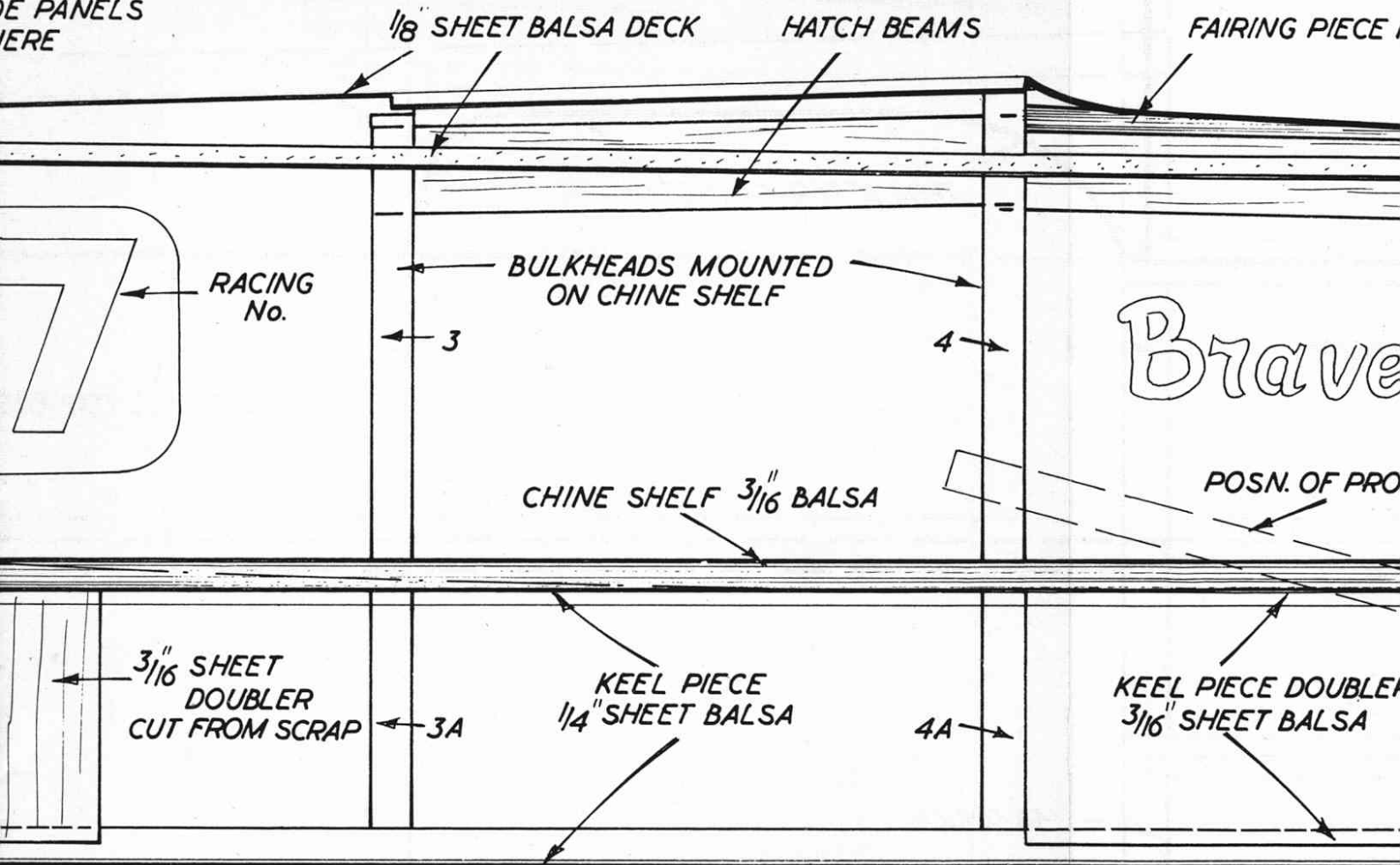


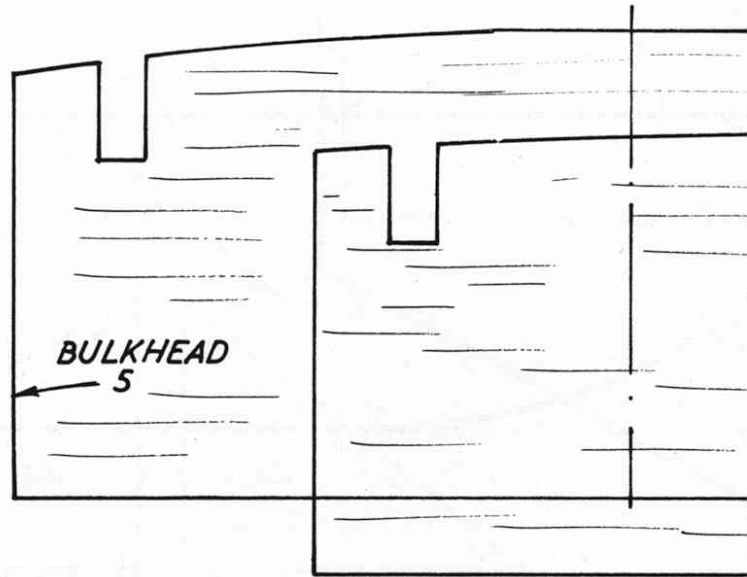
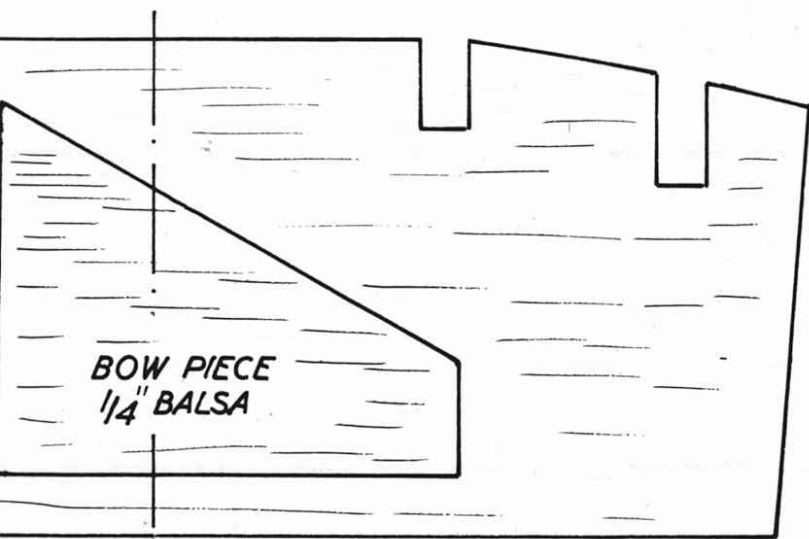
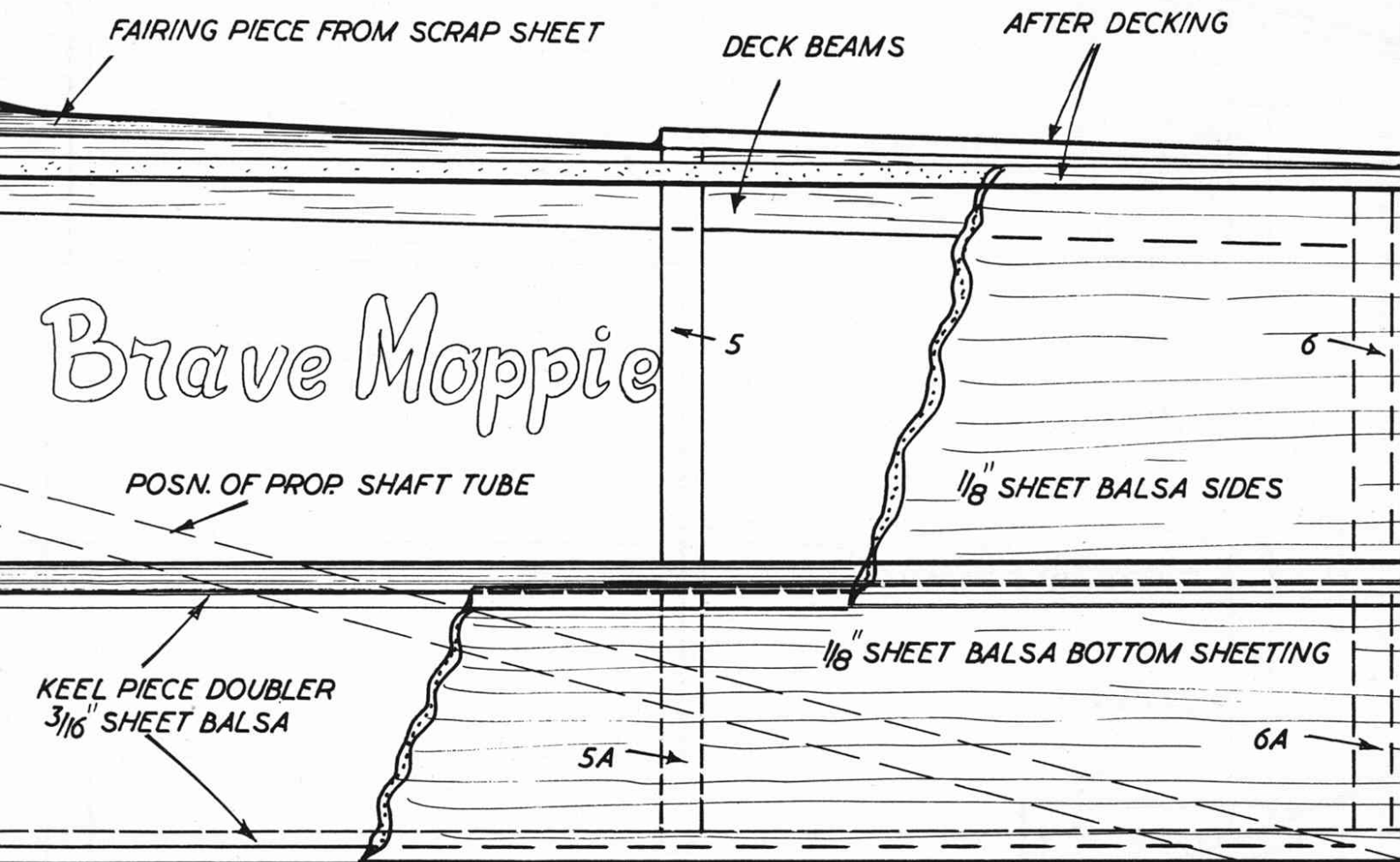
FULL SIZE PATTERNS FOR BULKHEADS



PROJECT '66 presented with MECCANO MAGAZINE

THE PANELS
HERE



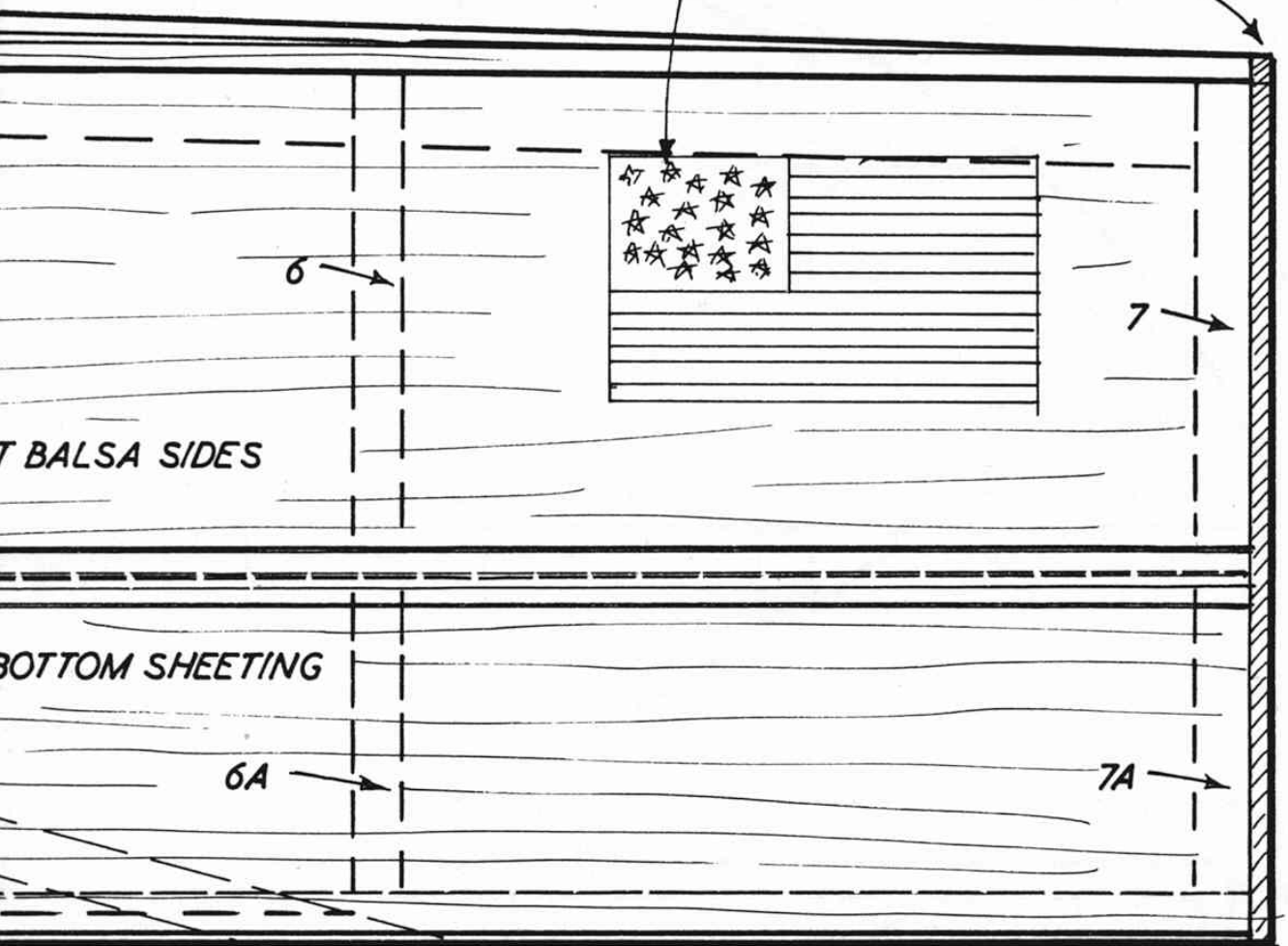


BULKHEADS CUT FROM 1/4" SHEET BALSAS

DECKING

NATIONAL FLAG - COUNTRY
OF ORIGIN OR ENTRY

1/16" PLY TRANSOM



BALSA SIDES

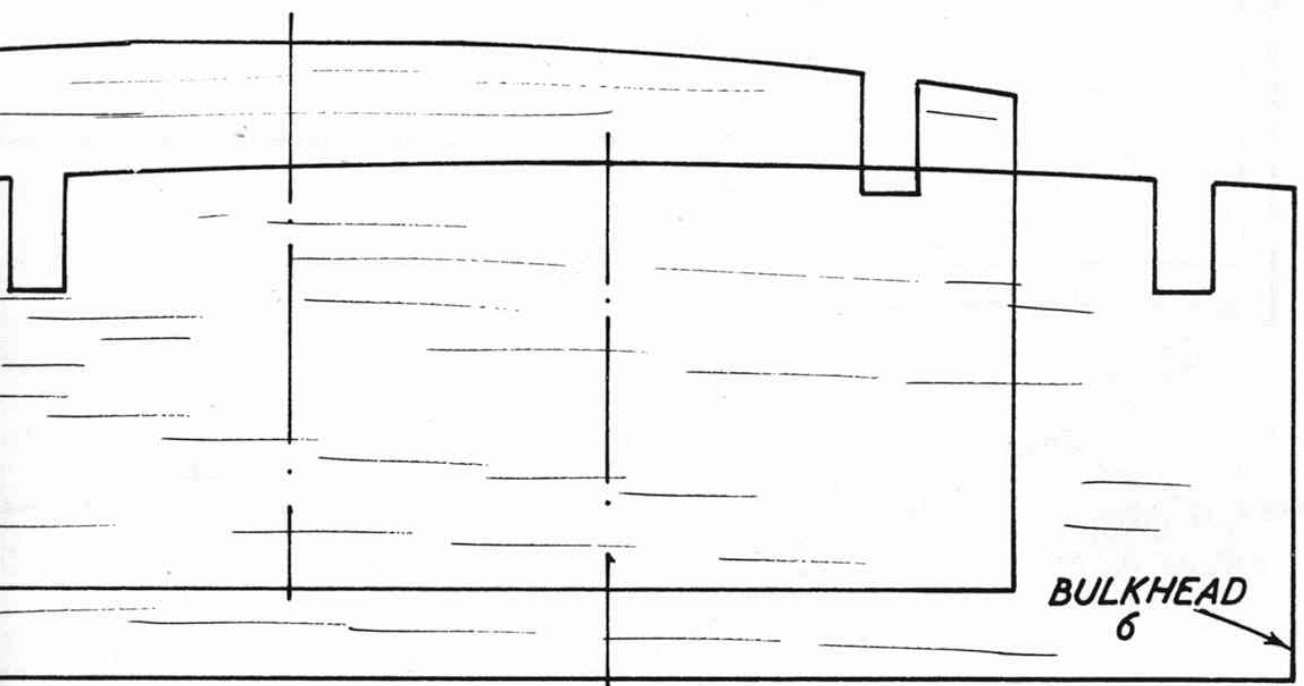
BOTTOM SHEETING

6

7

6A

7A



BULKHEAD
6

FOREDECK PANEL OUTLINE

BOW BLOCK

BOW PIECE

BULKHEADS

KEEL PIECE UNDER

2A UNDER

PATTERN FOR BULKHEAD 7
1/4" BALSAM SHEET

KEEL PIECE
CUT FROM 1/4"

7A - CUT TWO
FROM 1/4" BALSAM

7B
CUT ONE
FROM 1/16" PLY

2A

3A

