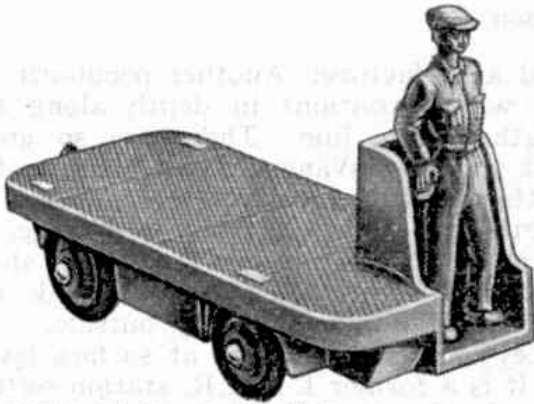


# Two New Dinky Toys

## A Heavy Tractor in the Supertoys Series



B.E.V. Electric Truck, Dinky Toys No. 14a.

THE B.E.V. Electric Truck, No. 14a, which was illustrated on the inside cover page of last month's "M.M.," is an addition to the Dinky Toys series that undoubtedly will give delight to thousands of enthusiasts. Trucks of this kind are coming into use on an ever-increasing scale for a variety of purposes in such places as works, warehouses, docks and railway yards. They are battery driven, with batteries that can be charged overnight to ensure that the trucks are available for a full day's work every day. Control is simple, and the trucks have the great advantage of handiness, as they can turn sharp corners and move about easily in confined spaces because of their small turning radius. They are made in all sizes, from small 10 cwt. models to large ones capable of carrying 3 tons.

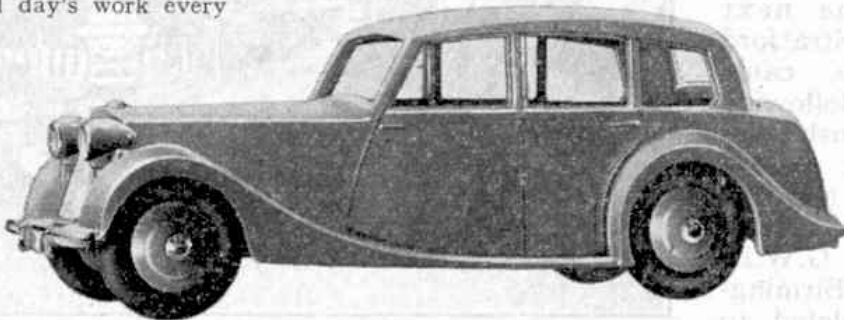
The Dinky Toys model is a lifelike reproduction of the B.E.V. platform truck in which every important external feature is clearly displayed. There is a wide platform of ample length, providing the maximum space for a load; underneath is a representation of the battery box; and at the front is the driver's platform, where the driver himself has one foot on the brake pedal and controls the power and steering by means of the levers provided. The driver is pressing on the brake pedal because the brake is applied by a spring when he lifts his foot, so that when the truck is standing the brakes are on. They are not released until the pedal is pressed down, and electrical interlocks ensure that the power cannot be applied until this is done.

One of the first of British cars produced since the end of the war was the Triumph "1800," a fine modern example of British motor engineering, with independent front wheel suspension, a tubular chassis frame and a gear lever mounted on the steering column below the wheel. The bodywork is no less outstanding. Of the two models produced, a roadster and a "knife edge"

saloon, it is the latter that is the prototype of the latest addition to the motor cars of the Dinky Toys series, No. 40b. The handsome appearance of the real car is beautifully reproduced in the model, which is a fine example of modern styling. An interesting feature, reproduced in the miniature, is the great width of the body at the front seat, which in the real car is wide enough to seat two passengers alongside the driver. This can be arranged without difficulty, as there are no controls to get in the way of the occupants of the seat; the hand brake is applied by a pistol-grip lever under the dash.

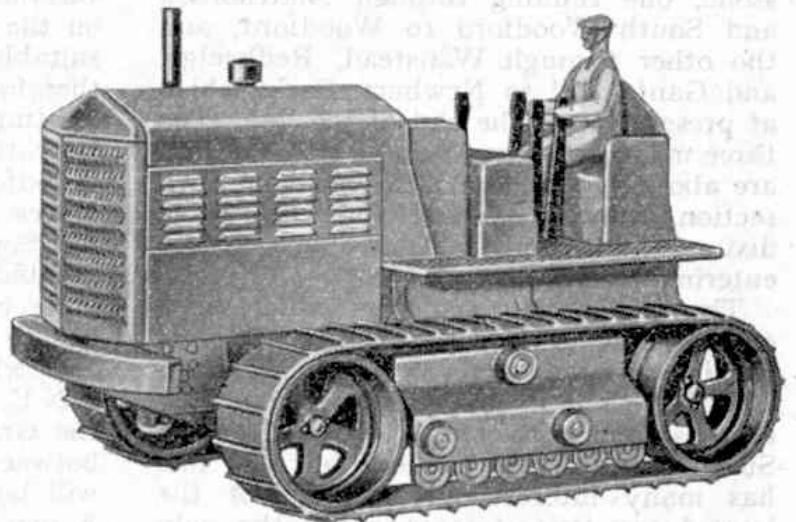
The third new product illustrated on this page is the Heavy Tractor, Dinky Supertoys No. 563. Real heavy tractors are designed for hard work, often on rough or muddy ground on which their creeper tracks give the necessary grip. They are largely used for haulage in excavation work, or when land is being cleared, as well as in large scale mechanised farming. The Dinky Supertoys miniature is a very imposing model, with a large bonnet that suggests a powerful engine, and here again a miniature driver is in position, with his control levers in front of him. There is no steering wheel, for the model is duly provided with creeper tracks, and steering is effected by speeding up or slowing down one or other of these, just as was done with tanks during

the war. The creeper track system of this impressive model consists of rubber bands, with which realistic movement is attained. The bands rotate freely and grip practically all types of surface well with only the weight of the model to give the necessary adhesion, so that the



Triumph "1800" Saloon, Dinky Toys No. 40b.

Tractor can readily be manoeuvred. A great advantage is that they do not scratch polished surfaces or otherwise damage them.



Heavy Tractor, Dinky Supertoys No. 563.